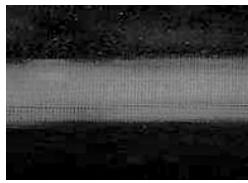


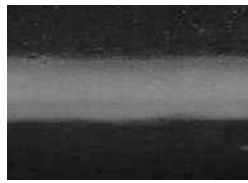


Protective Edge

Standard Color Palette



F001



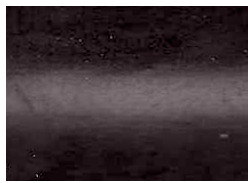
F002



F003



F004



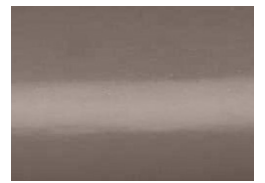
F005



F006



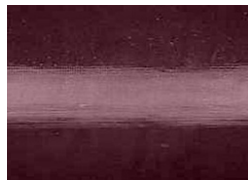
F007



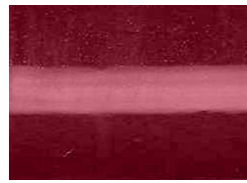
F008



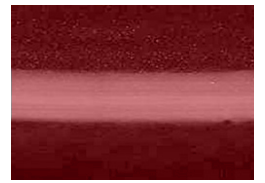
F009



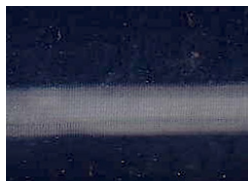
F010



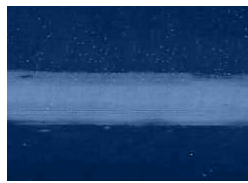
F011



F012



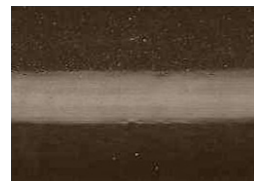
F013



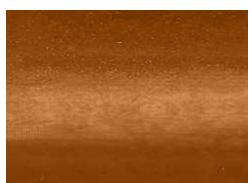
F014



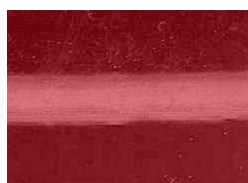
F015



F016



F017



F018



F019



F020

STANDARD EDGE COLORS:

We have made every effort to provide protective edge samples that closely represent the finished protective edge. However due to all the possible variants, we cannot guarantee that the protective edge color sample will accurately represent the protective edge color.

Technical Specifications

Density	ISO 1183	(@ 24 °C / 50% rh)	1,29	g/cm ³	± 0,03
Hardness	ISO 868	(@ 24 °C / 50% rh)	95	Shore D	± 2
Breaking before ageing	ISO 527	(@ 24 °C / 50% rh)	23,6	Mpa	Minimum
Heat ageing - Change of breaking	ISO 527 / IEC 60811-1-2	(@ 80 °C / 168 hr)		%	
Heat ageing - Change of breaking	ISO 527 / IEC 60811-1-2	(@ -20 °C / 168 hr)		%	
Elongation before ageing	ISO 527	(@ 24 °C / 50% rh)	126	%	Minimum
Heat ageing - Change of elongation	ISO 527 / IEC 60811-1-2	(@ 80 °C / 168 hr)		%	
Heat ageing - Change of elongation	ISO 527 / IEC 60811-1-2	(@ -20 °C / 168 hr)		%	
Resistance of water absorption	ISO 62	(@ 24 °C / 50% rh)		%	
Weight loss	ASTM D 2288	(@ 105 °C / 50 rh)		mg/cm ²	
Limit oxygen index	ISO 4589-2			%	
Fluidity index	ISO 1133	(@ 190°C / 10 kg)		g/10 min.	Minimum
Thermal stability (Change into yellow)	EN 60811-3-2	(@ 180 °C / 10 min)			



PATIR DESIGN GmbH
Dieselstr. 12
85386 Eching b. München
Germany

P:+ 49 (0) 8165 - 647 89 0
F:+ 49 (0) 8165 - 647 89 18

e-mail: info@patir.de

www.patir.de

